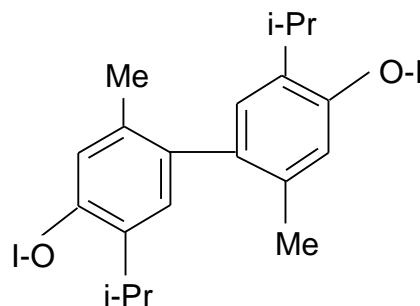


DATA SHEET

PRODUCT THYMOL IODIDE

Iodo Thymol, Dithymol Diiodide,
4,4'-Bis(iodoxy)-2,2'-dimethyl -5,5'-bis (1-
methylethyl)-1,1'-biphenyl, bithymoldiiodide,
dithymoliiodide, Aristol, Annidalin, Iodistol,
Iodohydromol, Iosol, Iothymol, Lothymol,,
Thymiode, Thymiodol, Thymodin, Thymotol.



Mol.Wt. = 550.23

CAS # 552-22-7
EINECS # 209-007-5

SOURCE

Synthetic

SPECIFICATION

Formula : C₂₀ H₂₄ I₂ O₂
Form : Solid Bulky Powder
Purity : Iodine content => 43% by
Titration
M.P. : > 100°C
BP : Decomposes.

SOLUBILITY

Insoluble in water, soluble in Chloroform and
Ether

PROPERTIES

Reddish Brown to Yellow Powder.

USES

Feed Additive, Anti-Fungal, Oral Antiseptic in
Dental Composition.